

TicketDesigner

SmartBridge Ticket Designer



Version 1.2

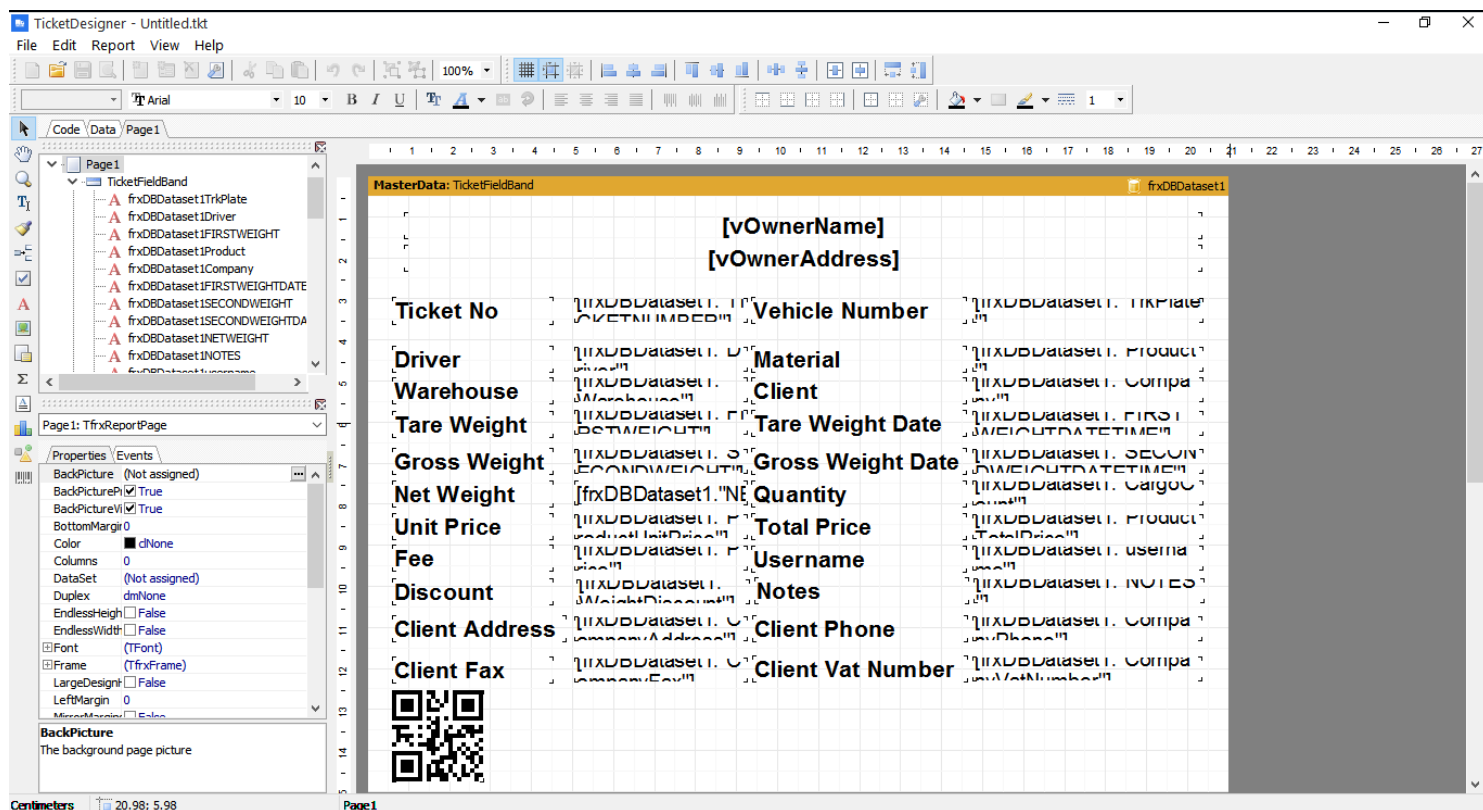
Quickstart guide

©2022

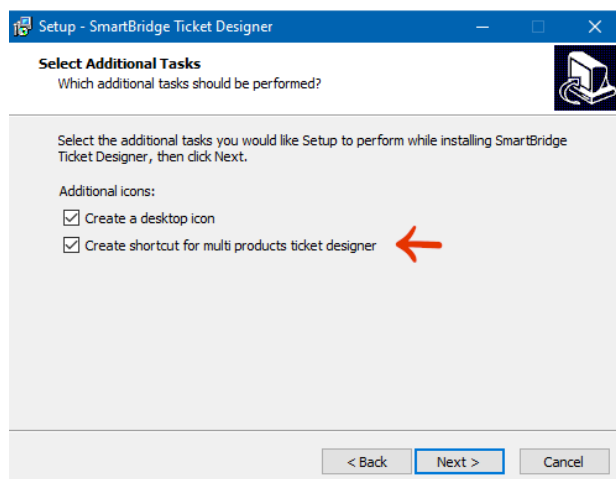
issamsoft.com

TicketDesigner

TicketDesigner is an external tool to help you design the weight ticket printing templates. It has all the options needed to design any printing template you need. You can add images, tables, barcodes, shapes ...etc. this tool has its own installer which you can download from the SmartBridge product page. **You cannot run the Ticket Designer and SmartBridge at the same time**; to run the Ticket Designer you should close SmartBridge first. The TicketDesigner is a [FastReport](#) reporting tool customized to produce/design SmartBridge ticket templates; you can read the FastReport users's manual if you want deep information about this tool.



The latest version of TicketDesigner has two modes, the normal one and the multi-products mode. During the installation process you can choose to install the multi-products mode. No need to install this mode unless you use SmartBridge in the multi-products mode.



TicketDesigner

When you start TicketDesigner it will create new ticket template, by default the TicketDesigner will save the ticket templates in the SmartBridge ticket templates directory but also -if you want- you can save it in other locations. You can also use TicketDesigner to open existing ticket templates for editing.


In the ticket design area it shows all the ticket fields with its titles, you can change these fields and titles position, font, style ...etc. the fields titles are in bold font. **Don't change the names of ticket fields and titles.** At the top there are two text boxes (vOwnerName, vOwnerAddress). These two texts will print the Owner Name, Owner Address as you enter it in the SmartBridge "Settings" screen.

General

Owner/Company Name

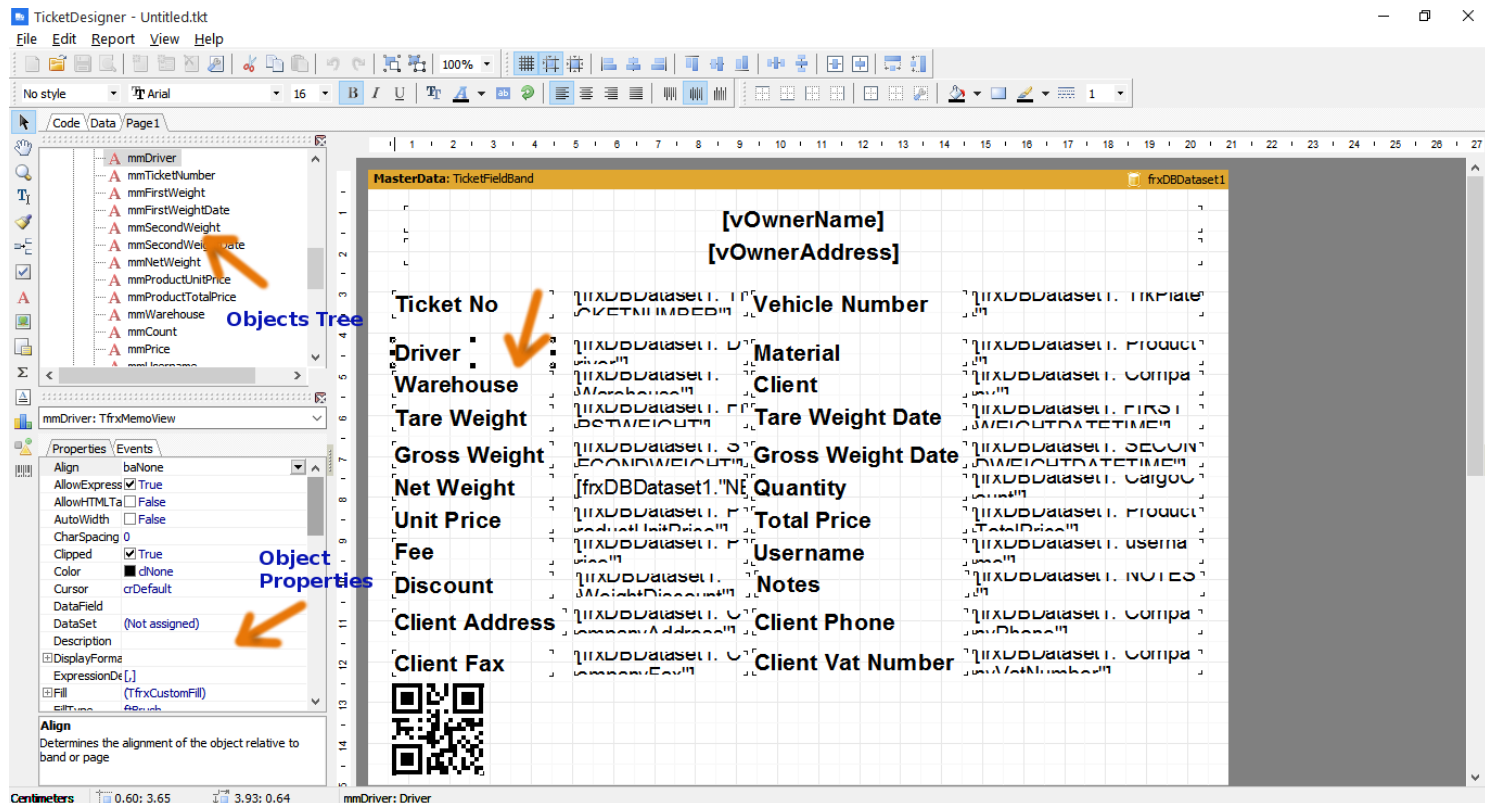
Owner Address

Save

MasterData: TicketFieldBand		frxDBDataset1	
[vOwnerName]			
[vOwnerAddress]			
Ticket No	[frxDBDataset1."TICKETNUMIDED"]	Vehicle Number	[frxDBDataset1."TICKPLATE"]
Driver	[frxDBDataset1."DRIVER"]	Material	[frxDBDataset1."PRODUCT"]
Warehouse	[frxDBDataset1."WAREHOUSE"]	Client	[frxDBDataset1."COMPANY"]
Tare Weight	[frxDBDataset1."TAREWEIGHT"]	Tare Weight Date	[frxDBDataset1."TAREWEIGHTDATETIME"]
Gross Weight	[frxDBDataset1."GROSSWEIGHT"]	Gross Weight Date	[frxDBDataset1."GROSSWEIGHTDATETIME"]
Net Weight	[frxDBDataset1."NETWEIGHT"]	Quantity	[frxDBDataset1."QUANTITY"]
Unit Price	[frxDBDataset1."UNITPRICE"]	Total Price	[frxDBDataset1."TOTALPRICE"]
Fee	[frxDBDataset1."FEE"]	Username	[frxDBDataset1."USERNAME"]
Discount	[frxDBDataset1."DISCOUNT"]	Notes	[frxDBDataset1."NOTES"]
Client Address	[frxDBDataset1."CLIENTADDRESS"]	Client Phone	[frxDBDataset1."CLIENTPHONE"]
Client Fax	[frxDBDataset1."CLIENTFAX"]	Client Vat Number	[frxDBDataset1."CLIENTVATNUMBER"]
		Field Title	Field Data

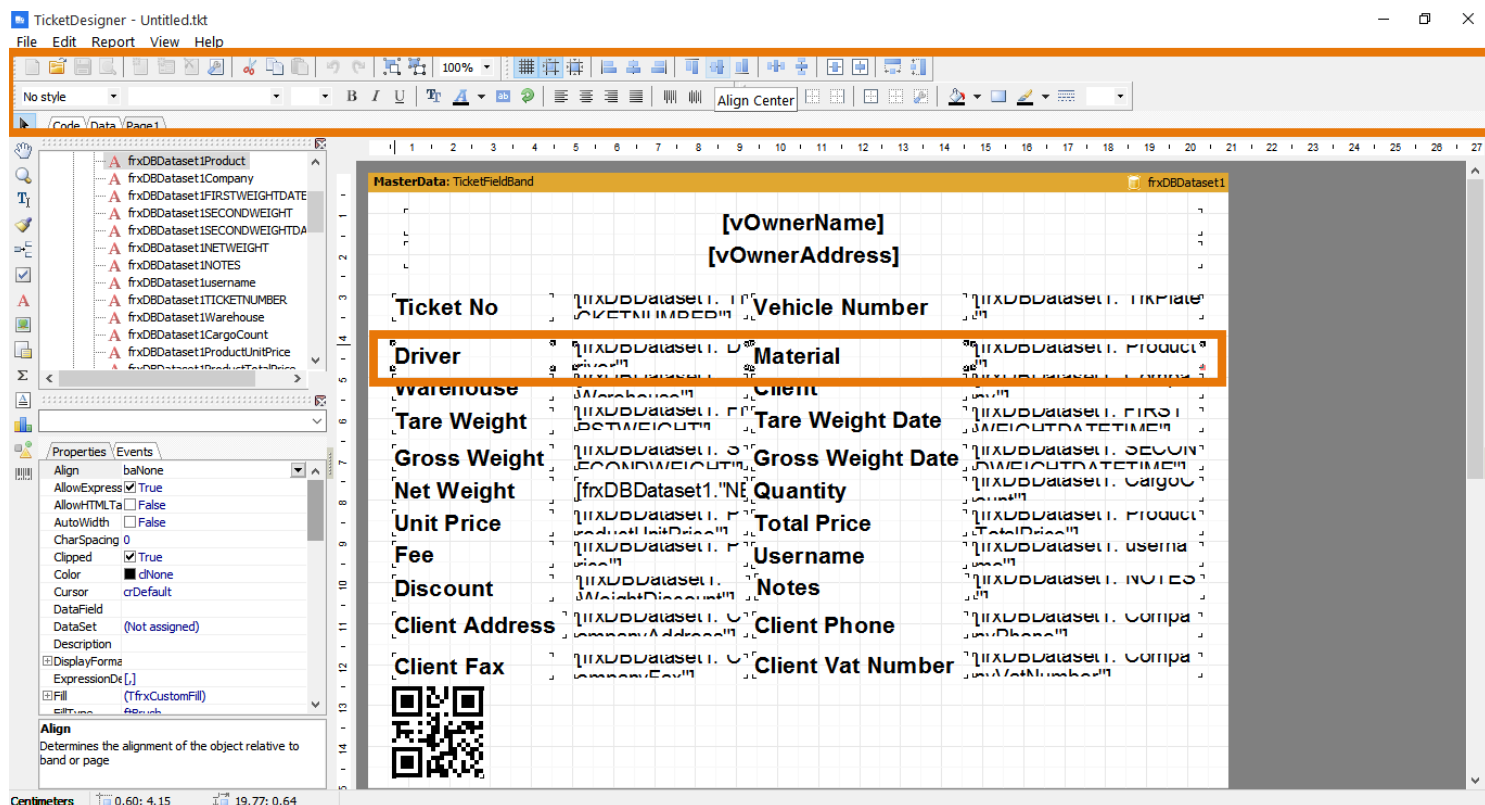
TicketDesigner

To the left there are the Objects Tree and the Object Properties panels. Select an object (Text, Image ...etc) in the design area and Use the Object properties panel to change its properties, like font, color style ...etc. to unselect you can press the Esc button on the keyboard.

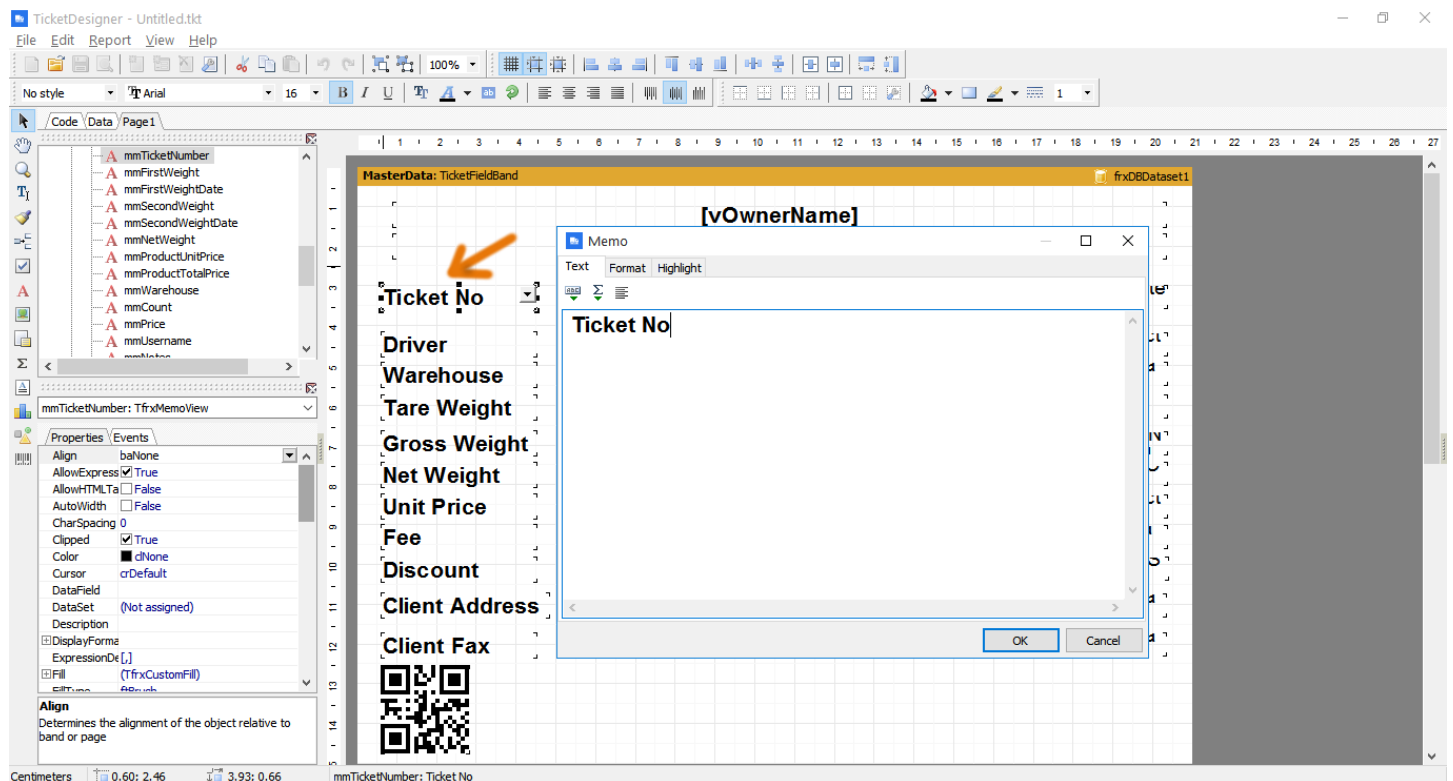


You can also use the tool bar at the top to change some object properties, or to align multi selected objects.

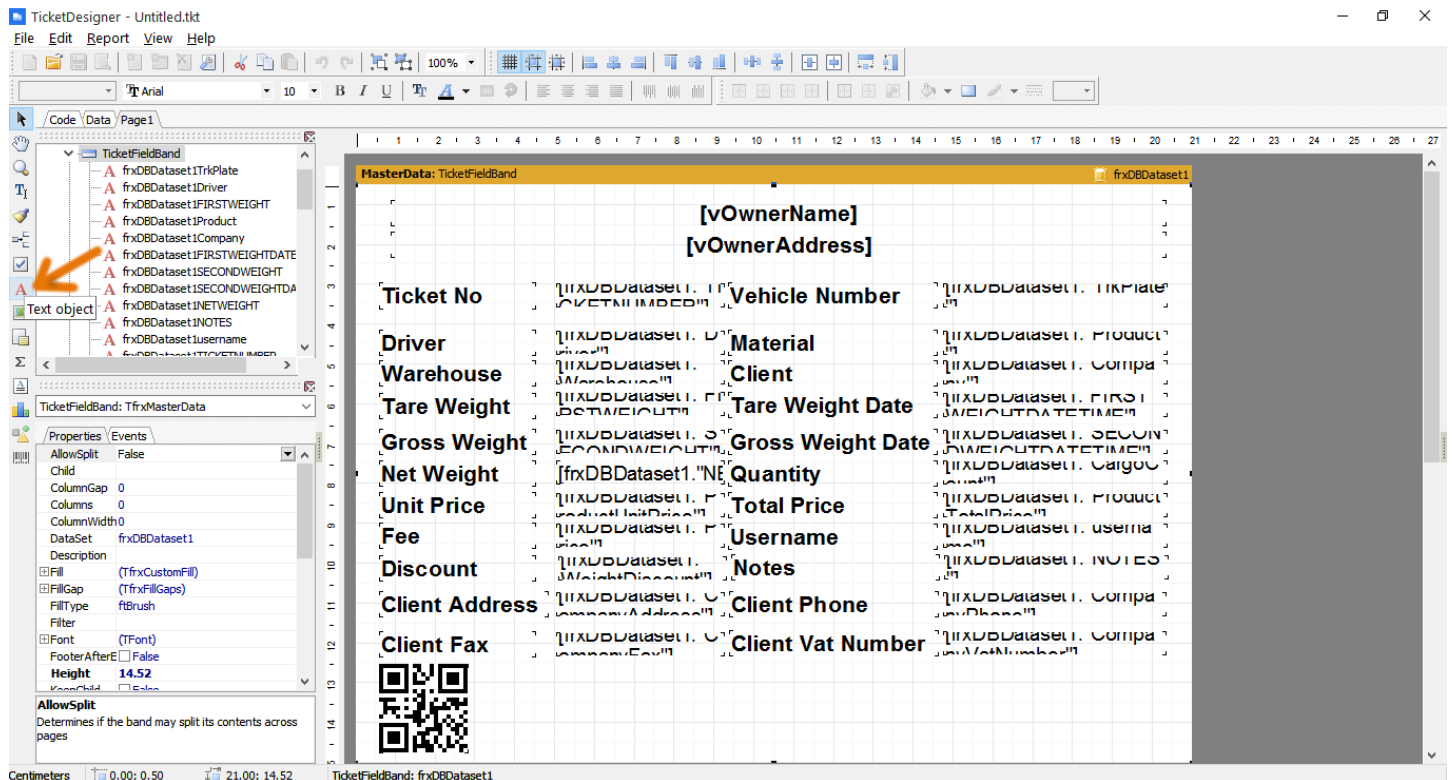
TicketDesigner



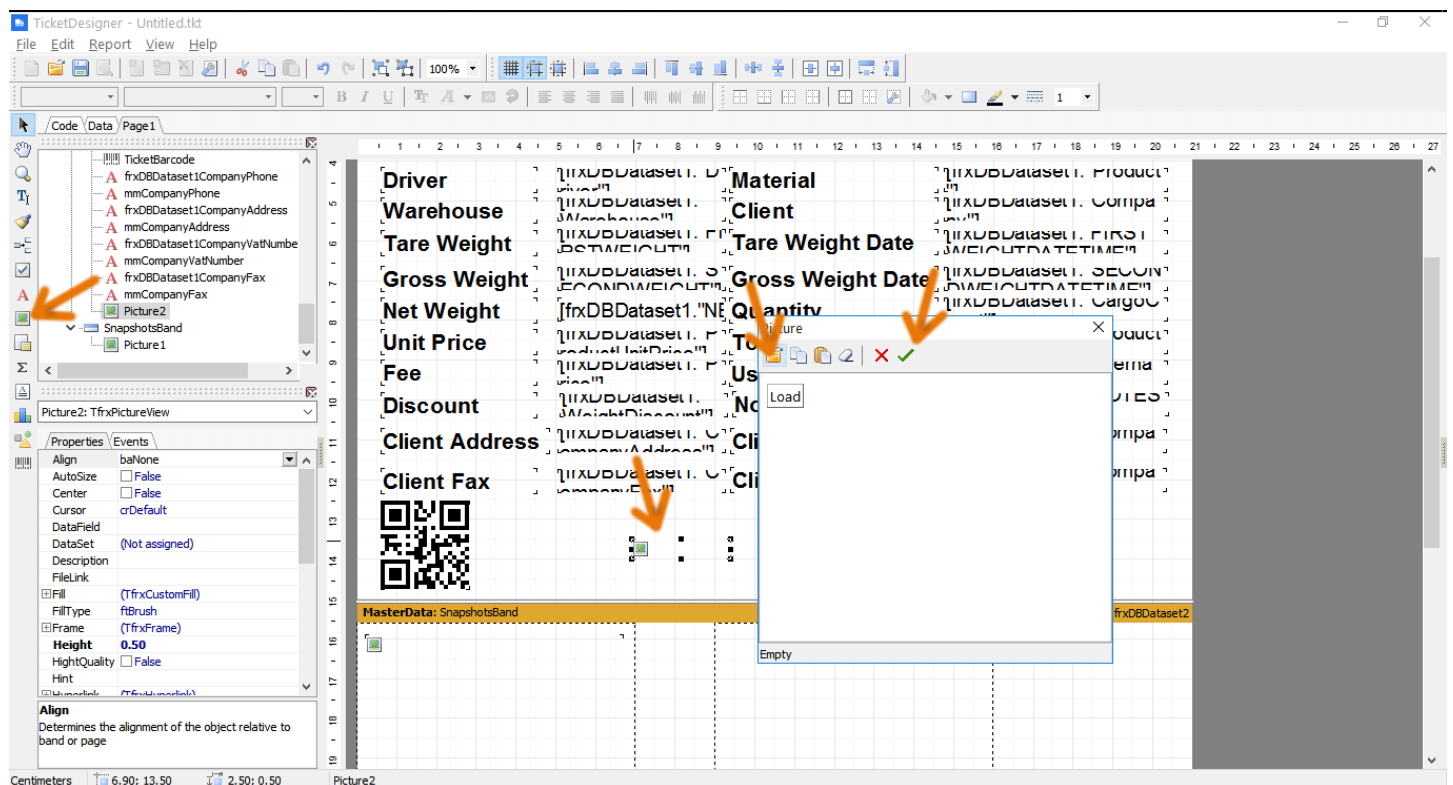
You can change the titles of the ticket fields by double clicking on that title and change the text in the dialog box.



You can delete objects by the selecting the object and then press the Delete button on keyboard. You can also add new objects to the ticket template. To add a text object, press on the Text and then left click on the template design area.

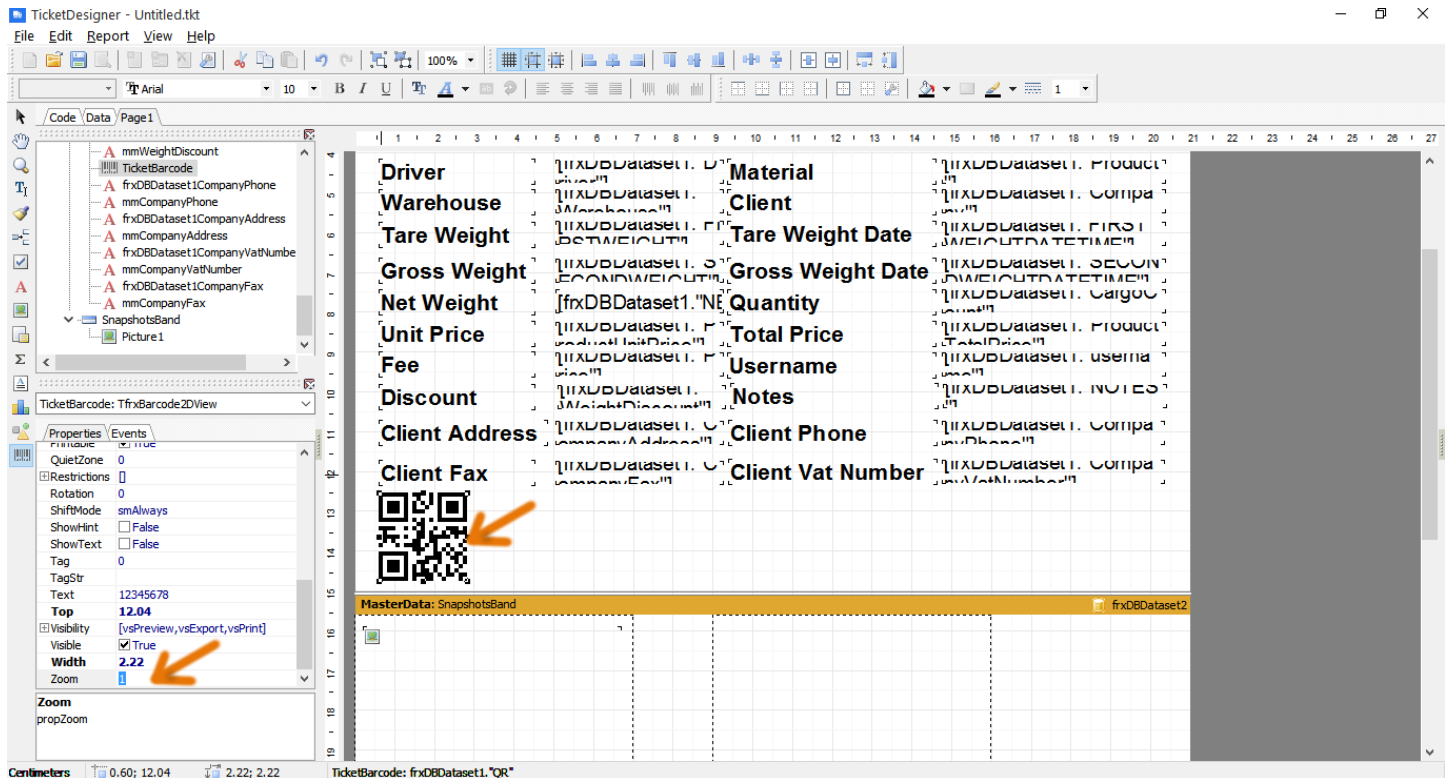


To add image to the ticket template, press the Picture Object button and left click on the ticket design area, then on the picture dialog press the Load button to select an image from your computer and then press the Ok button.



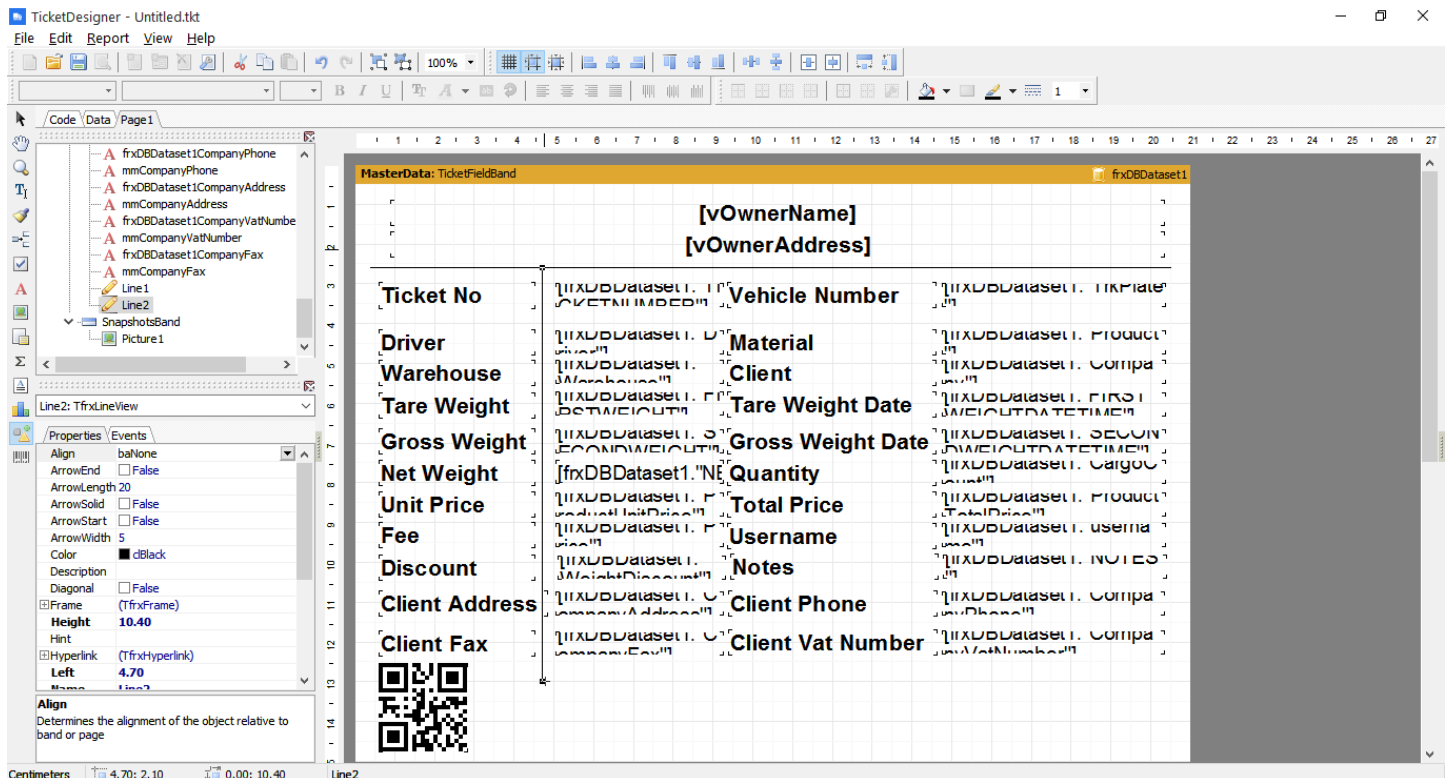
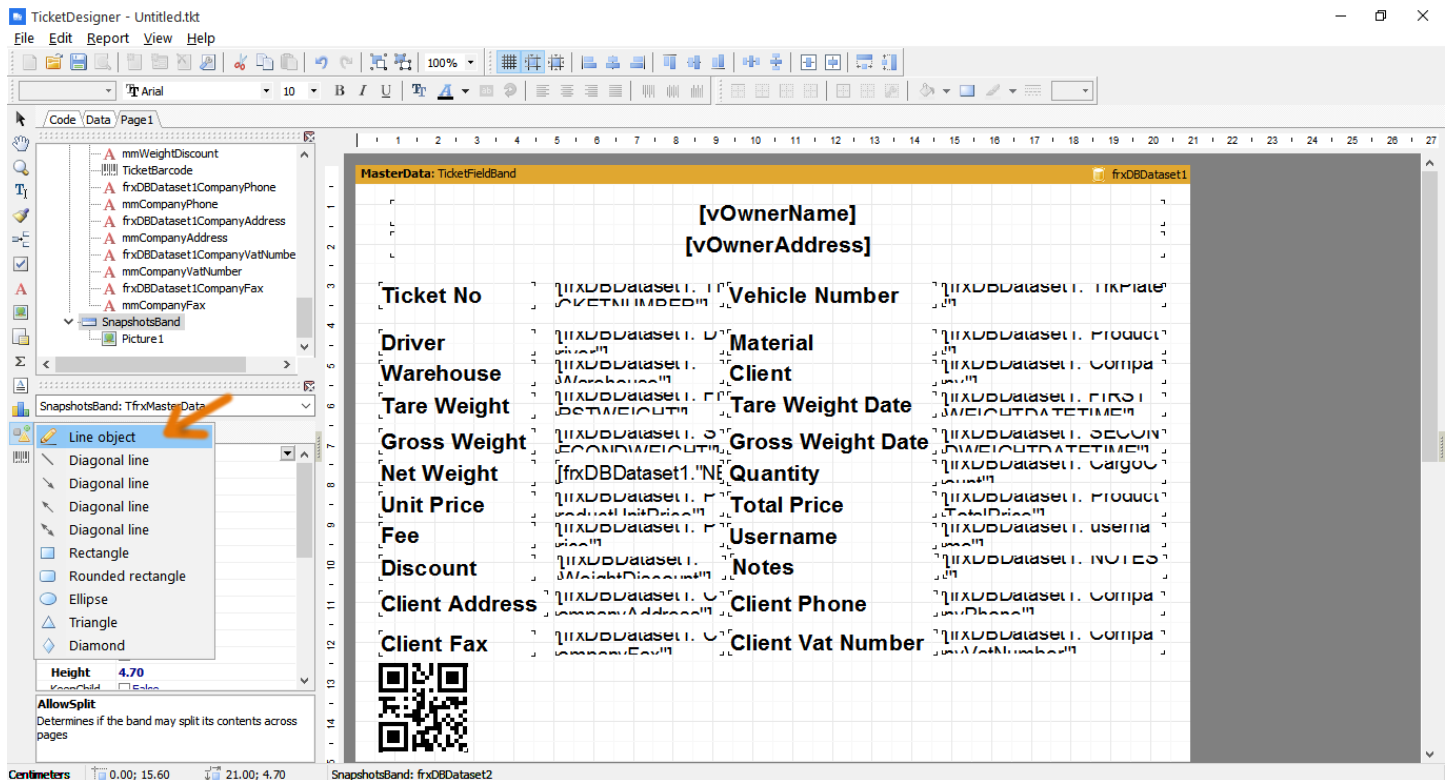
TicketDesigner

The Barcode/QR object will contain all ticket data. It will resize itself due the size of the ticket data. You can resize the barcode object by selecting the barcode object and change the Zoom property, e.g. if you want to reduce the barcode size by 50% set the zoom property to 0.5.



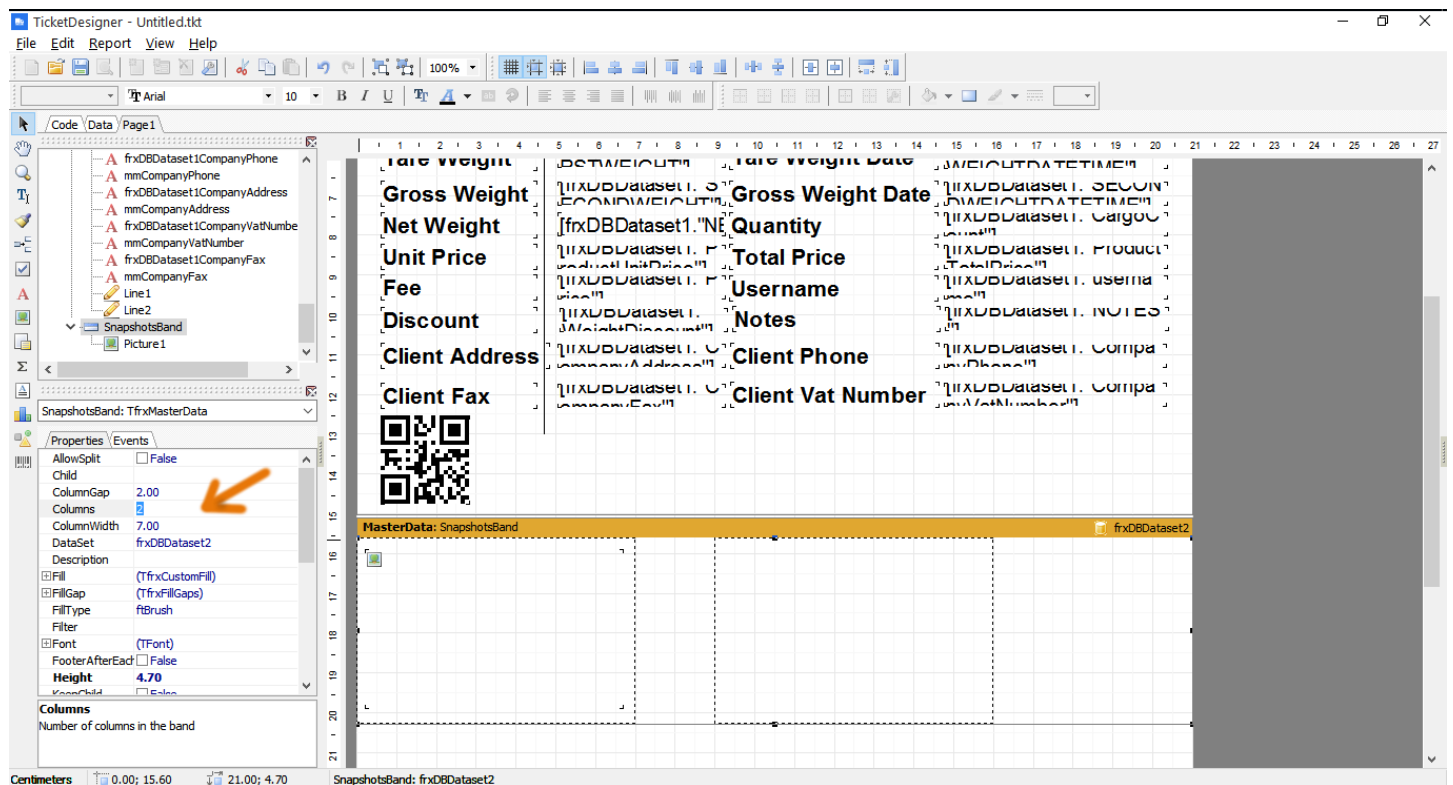
To draw table on the ticket template, click on the Draw button and select Line Object, then draw the table on the template design area.

TicketDesigner

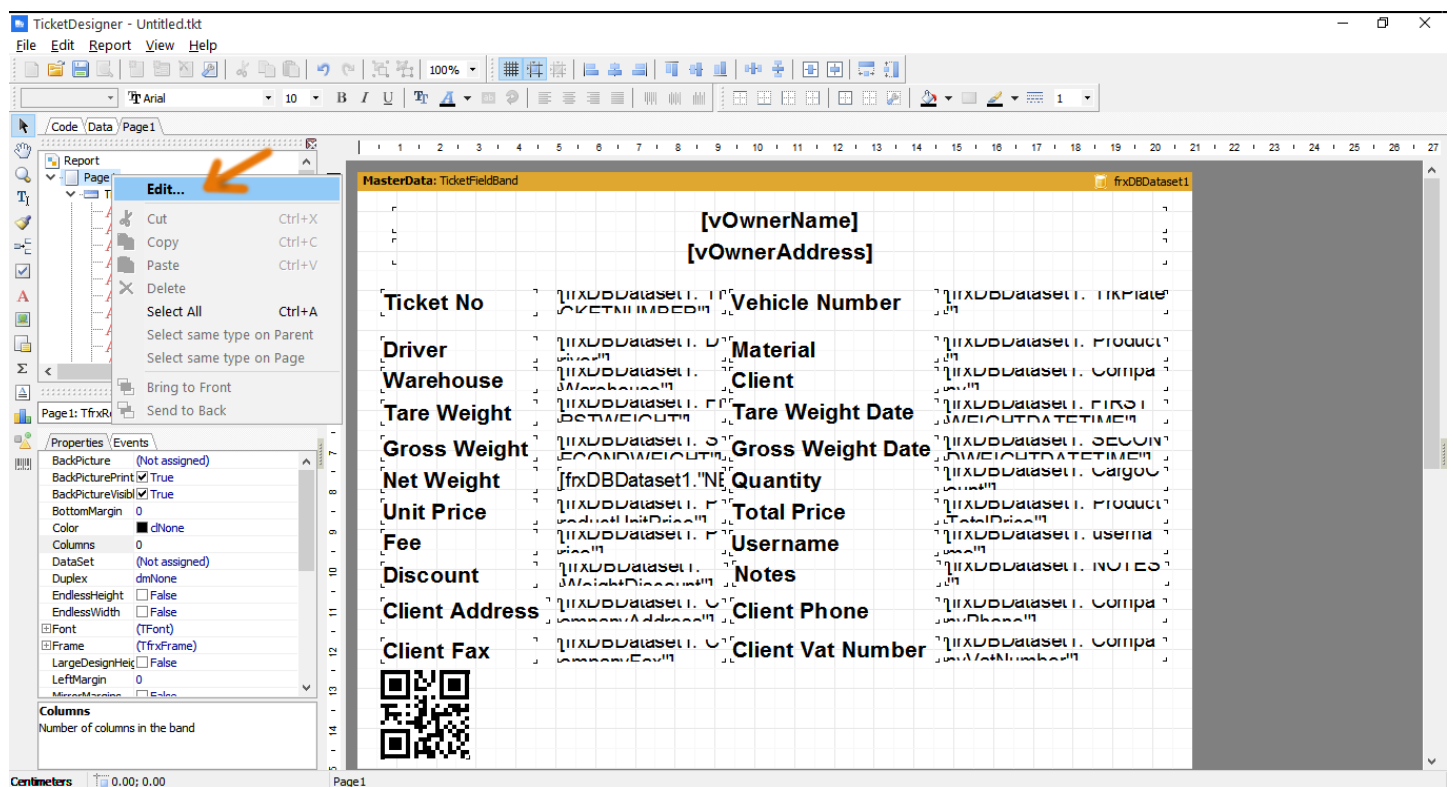


In the CCTV snapshots band you can change how to print the cameras snapshots. By default the snapshots are printing in columns, To change this select the band and change the columns count, width and gap properties.

TicketDesigner



To change the ticket dimensions, orientation and other print options, right click on the Page node on the Objects tree and select Edit.



Then from the Page Options dialog box change the page options as you want.

